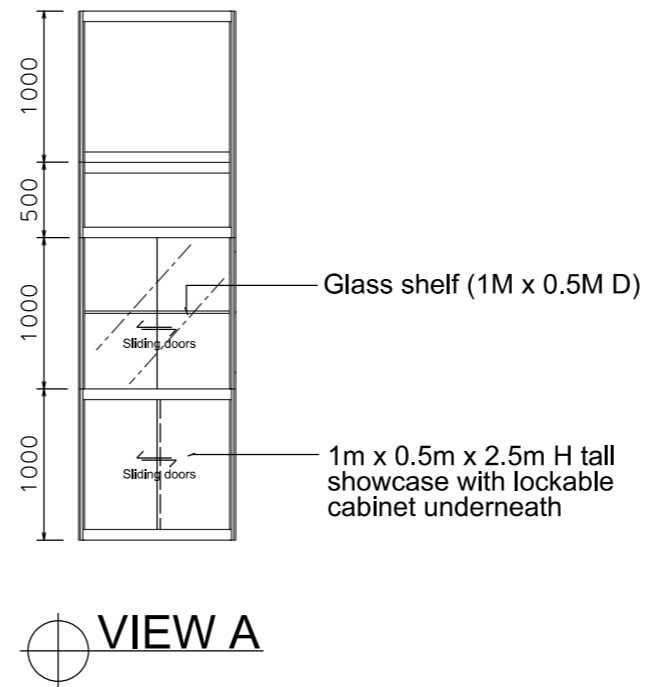
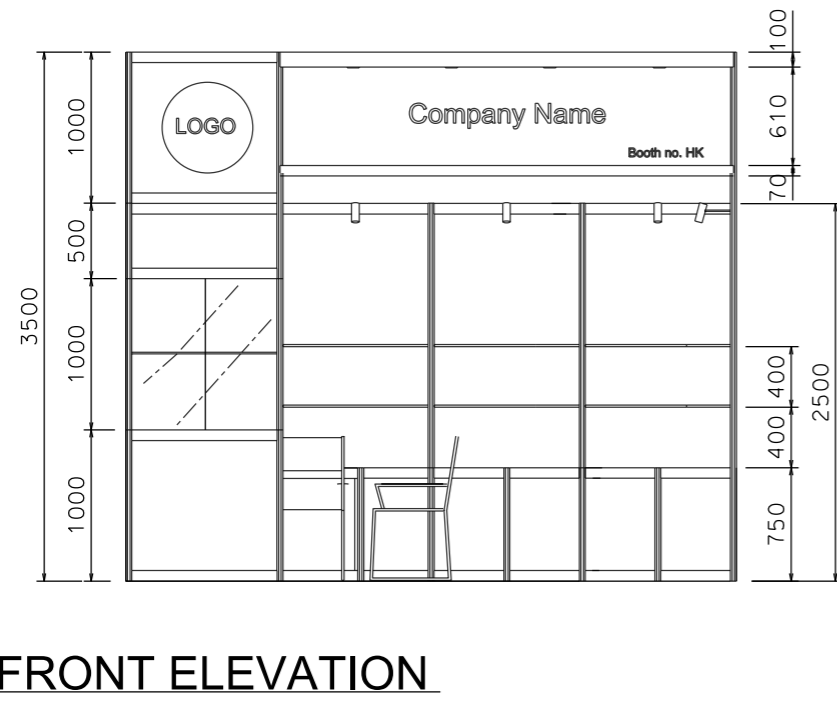
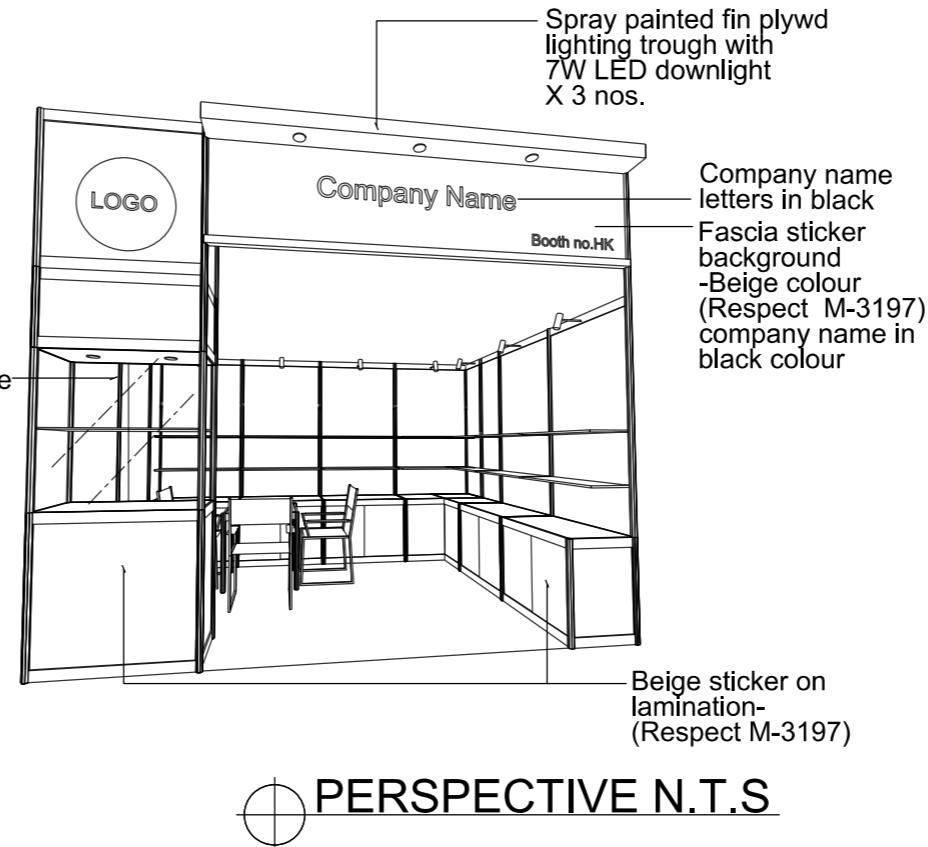
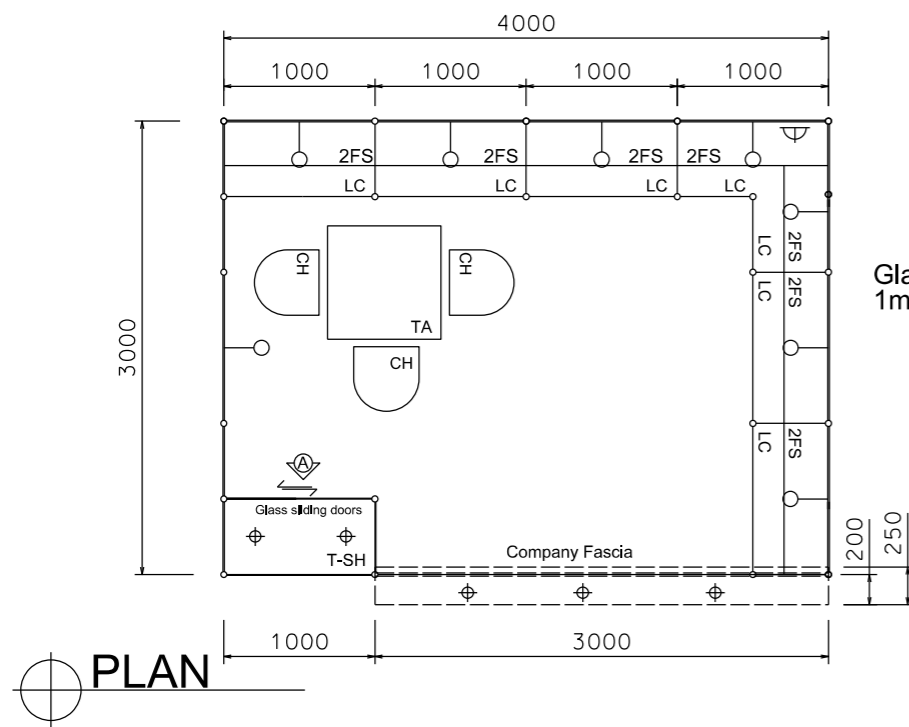


Premium Booth 4mW x 3mD One side open

SD-A-12
4mW x 3mD x 3.5mH



BOOTH SPECIFICATION		QTY
	Tall showcase in beige sticker lamination, 1 layer of glass shelf, 2x 7W LED downlights	1
	Lockable cabinet in beige sticker lamination (1mL x 0.5mD x 0.75mH)	6.5
	Wooden shelf (flat) (1mL x 0.3mD)	14
	Square meeting table (0.7m X0.7m x 0.75mH)	1
	Black leather chair	3
	13W LED Lamp Longarmed Spotlight (yellow)	8
	7W LED light (for fascia)	3
	500w Square pin power socket	1
	Company Logo	1

FILE PATH - L:\Local Fair Premium Booth 2011\SD-Layouts\SD-A layout\SD-A-Layout-New.dgn



NOTES UNLESS OTHERWISE SPECIFIED ALL DIMENSIONS ARE IN MM.

.....

REVISION
 09-02-2009
 18-05-2009
 15-07-2009
 21-01-2010
 08-01-2019

DATE: 08-01-2019
 SCALE: 1 : 50 (A3)
 DRAWN BY: ..
 CHECKED BY:

TITLE
 Premium Booth SD-A-12

PROJECT
 PREMIUM BOOTH 4m x 3m
 DATE: XXXXXXXX

SHEET
 SD-A02