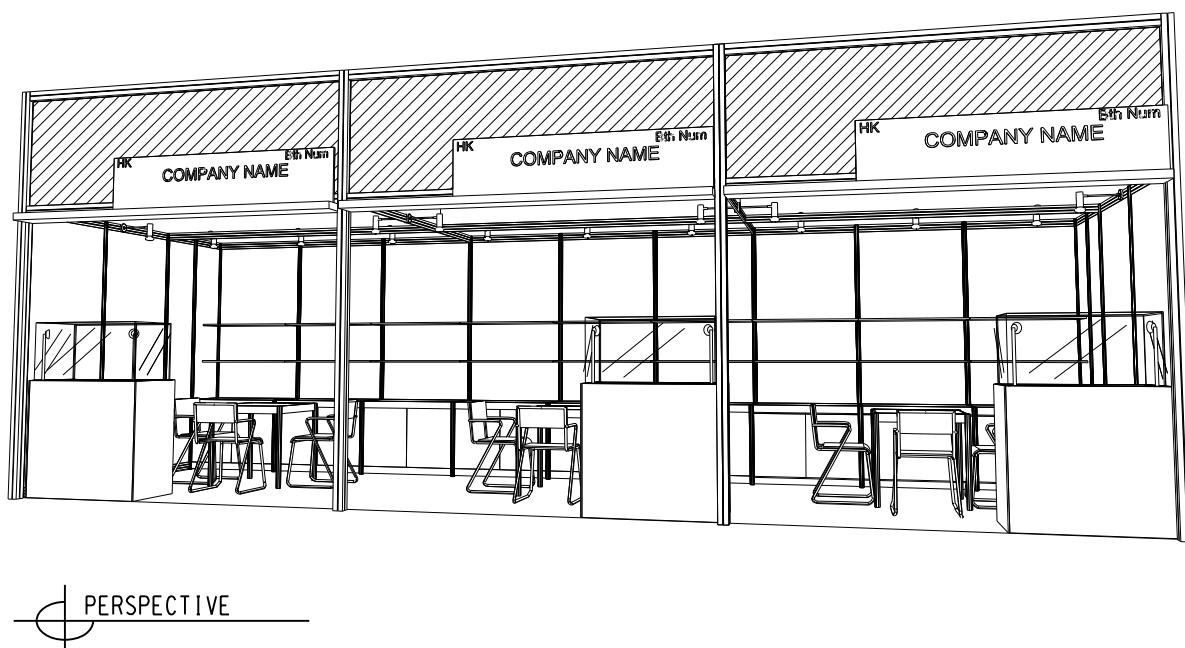
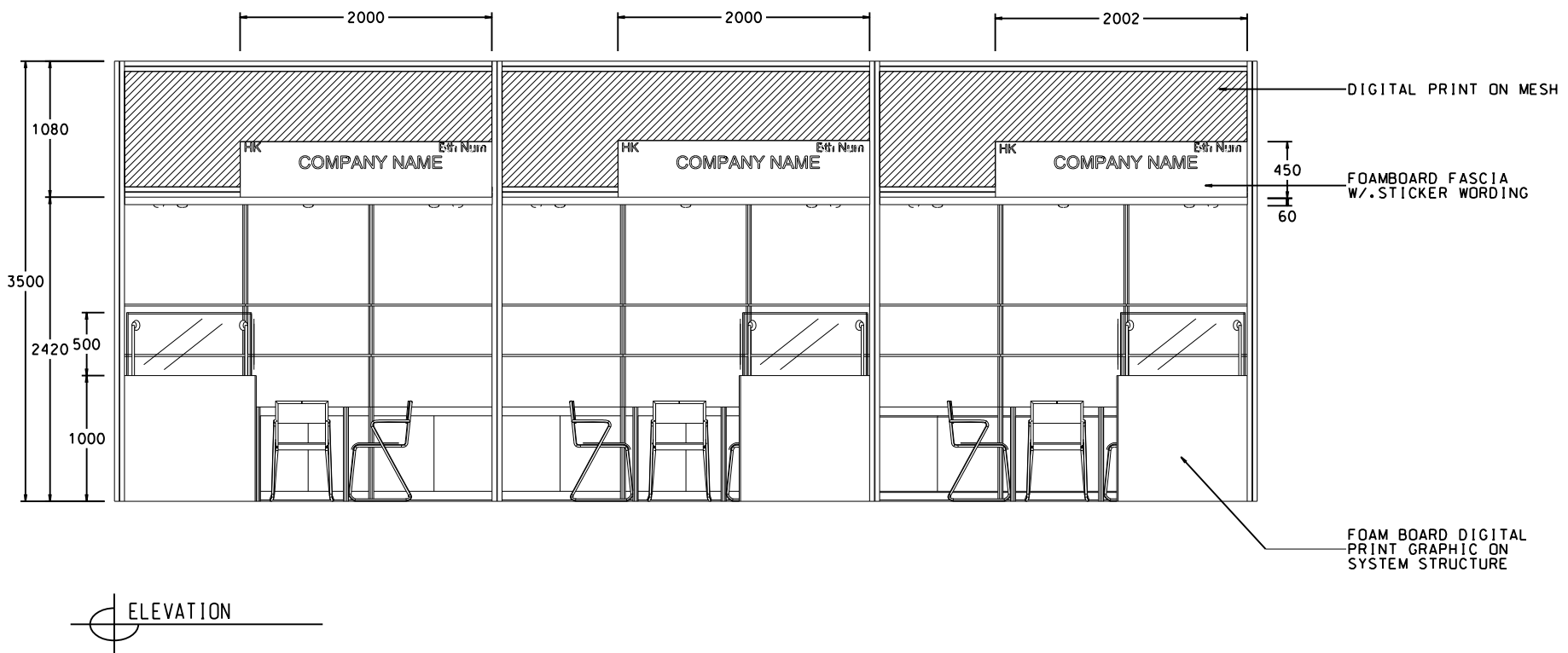
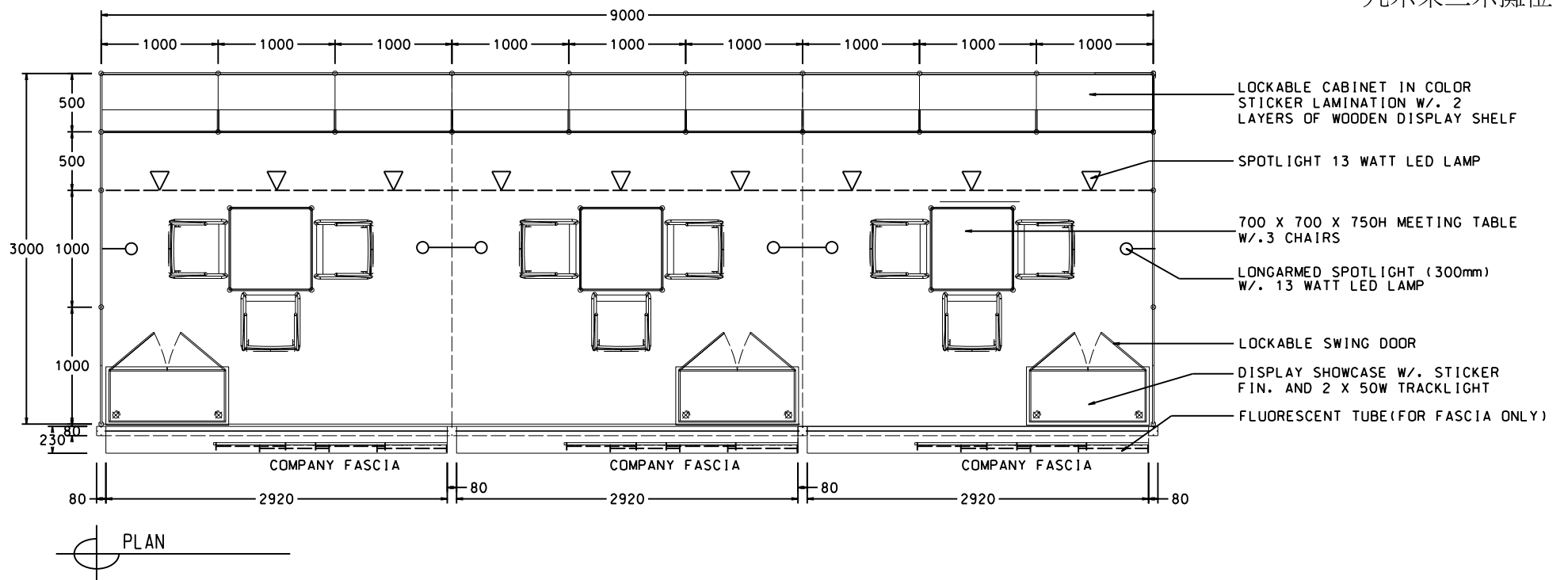


# Hong Kong Houseware Fair

## 香港家庭用品展

### 9M x 3M WORLD OF FINE DINING BOOTH

九米乘三米攤位



BOOTH SPECIFICATIONS		QTY.
	1000W x 500D x 750H LOCKABLE CABINET	9
	3000W x 300D WOODEN DISPLAY SHELF	6
	FLUORESCENT TUBE (FOR FASCIA ONLY)	12
	SPOTLIGHT 13 WATT LED LAMP (YELLOW LIGHT)	9
	LONG ARMED SPOTLIGHT (300MM) 13 WATT LED LAMP (YELLOW LIGHT)	6
	DISPLAY SHOWCASE W/. STICKER FIN. AND 2 X 50W TRACKLIGHT	3
	700W x 700D x 750H MEETING TABLE	3
	BLACK LEATHER CHAIR	9
	CEILING BEAM	15M
	RUBBISH BIN & CARPET (27sqm.)	

\*The Hong Kong Trade Development Council reserves the right to change the configuration if necessary.

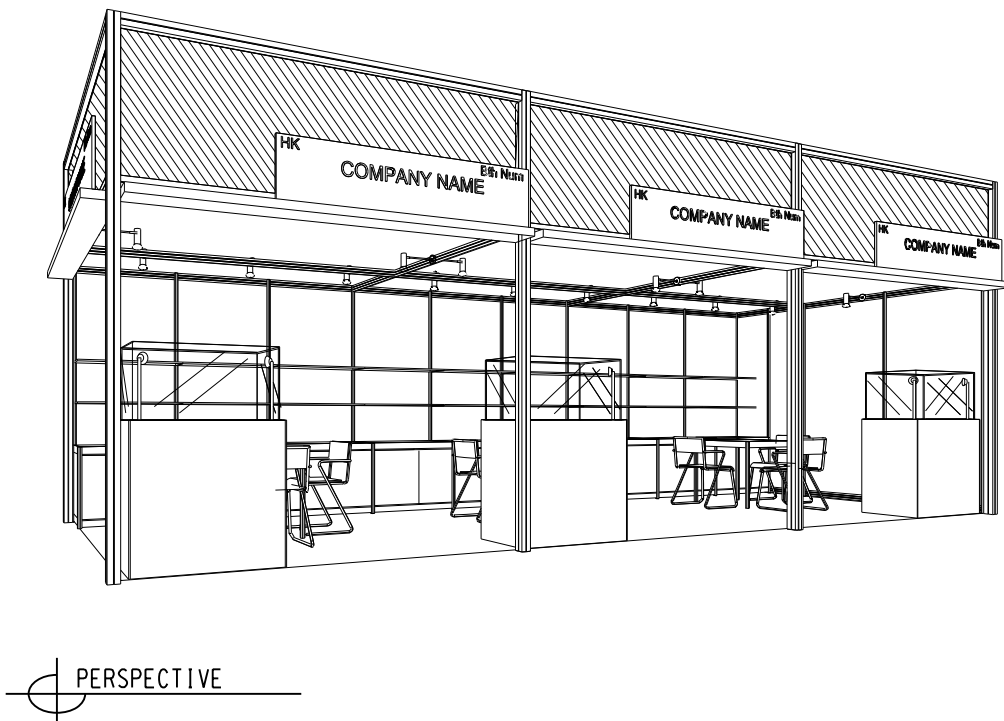
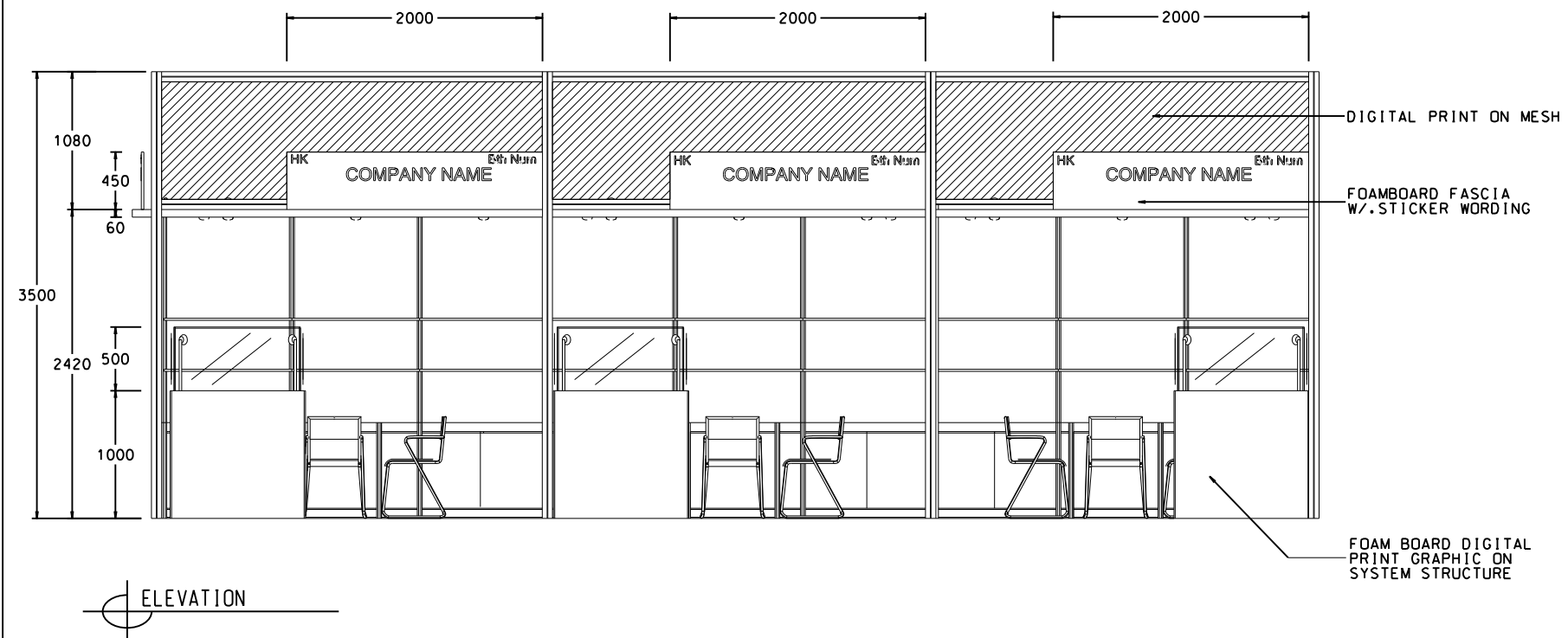
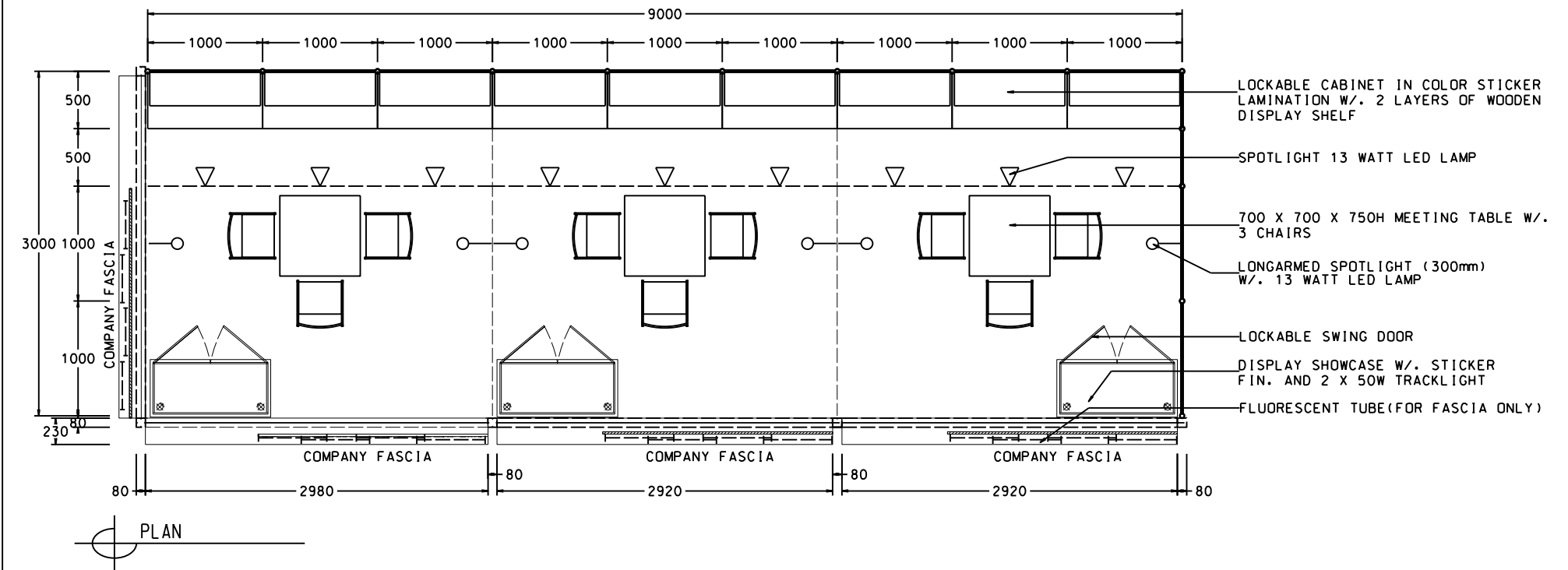
\*如有需要，香港貿易發展局有權更改攤位結構。

# Hong Kong Houseware Fair

## 香港家庭用品展

### 9M x 3M WORLD OF FINE DINING LEFT CORNER BOOTH

九米乘三米左邊角位攤位



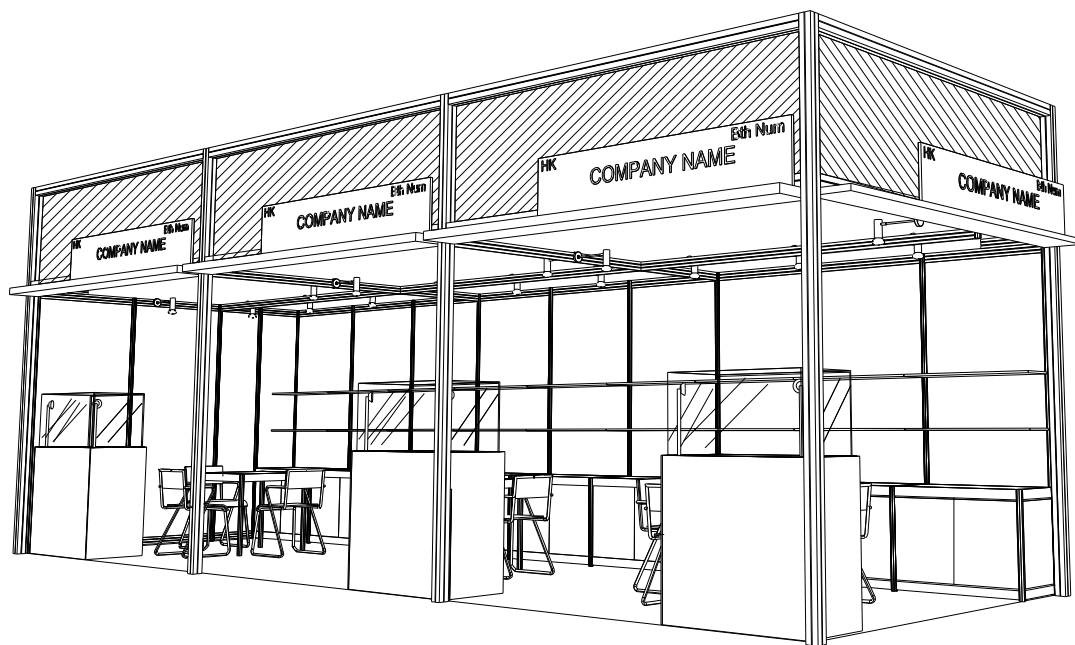
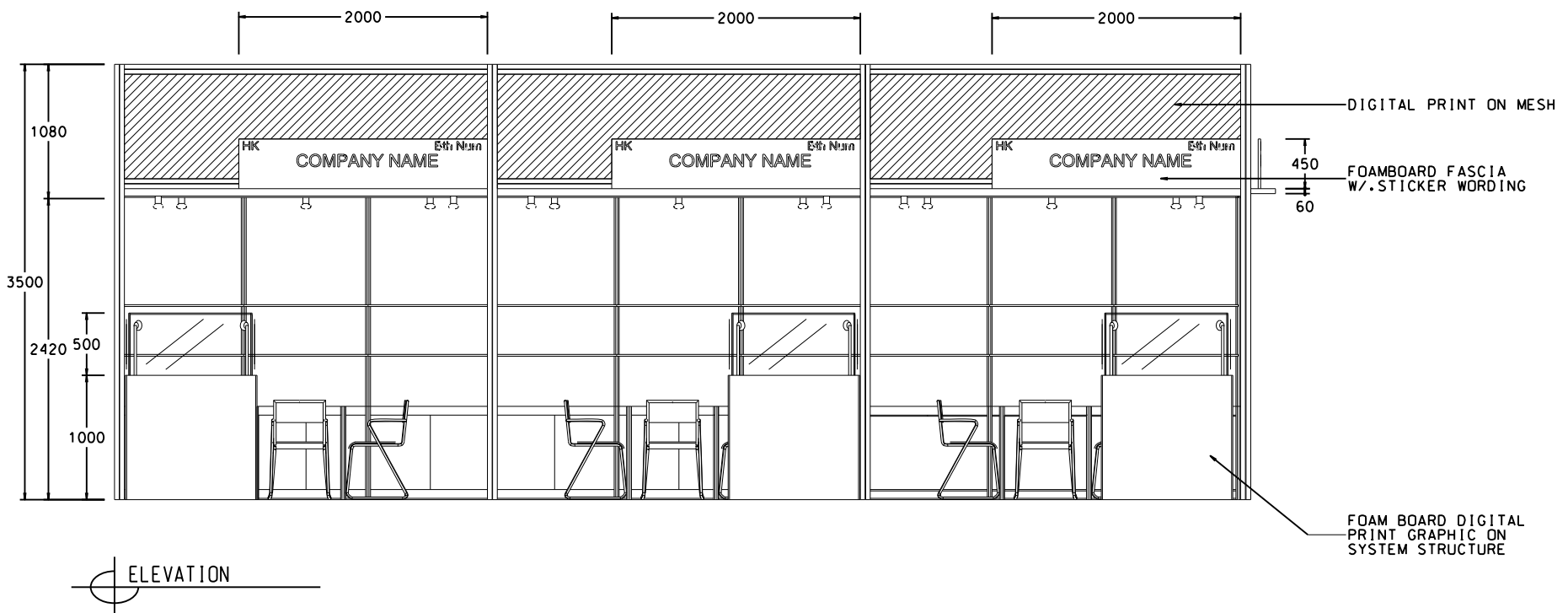
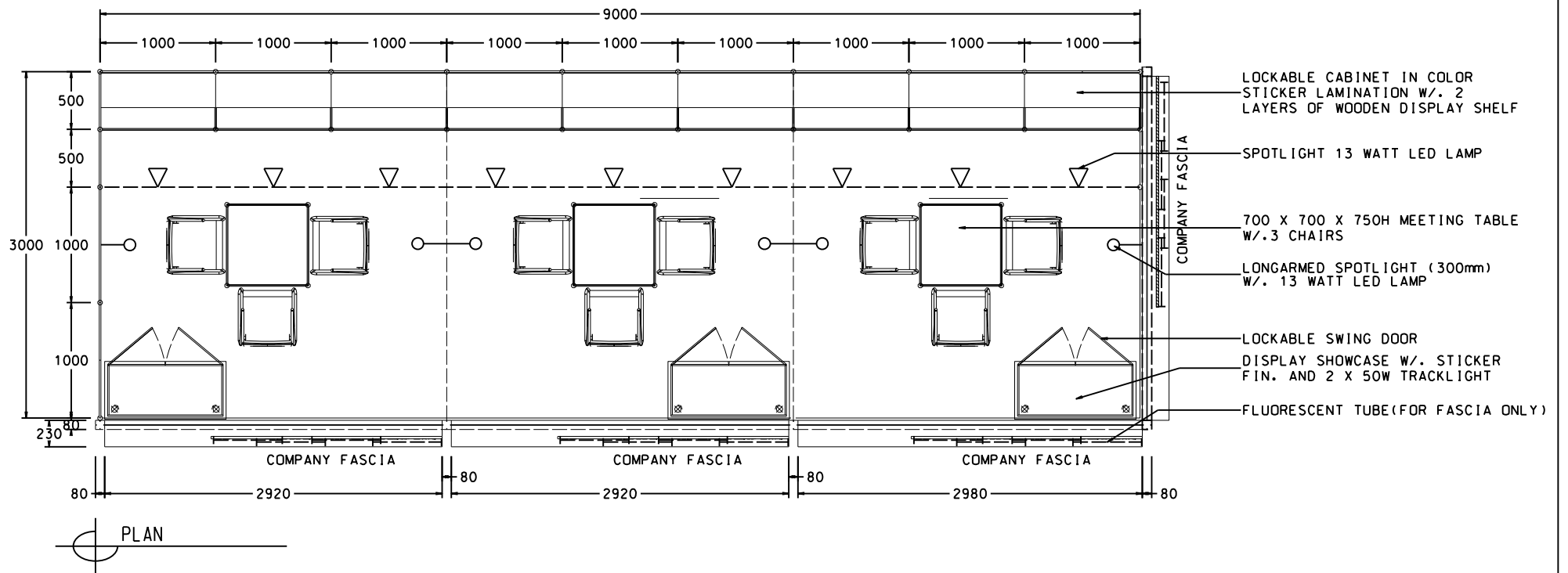
BOOTH SPECIFICATIONS		QTY.
	1000W x 500D x 750H LOCKABLE CABINET	9
	3000W x 300D WOODEN DISPLAY SHELF	6
	FLUORESCENT TUBE (FOR FASCIA ONLY)	16
	SPOTLIGHT 13 WATT LED LAMP (YELLOW LIGHT)	9
	LONG ARMED SPOTLIGHT (300MM) 13 WATT LED LAMP (YELLOW LIGHT)	6
	DISPLAY SHOWCASE W/. STICKER FIN. AND 2 X 50W TRACKLIGHT	3
	700W x 700D x 750H MEETING TABLE	3
	BLACK LEATHER CHAIR	9
	CEILING BEAM	15M
	RUBBISH BIN & CARPET (27sqm.)	

\*The Hong Kong Trade Development Council reserves the right to change the configuration if necessary.

\*如有需要，香港貿易發展局有權更改攤位結構。

### 9M x 3M WORLD OF FINE DINING RIGHT CORNER BOOTH

九米乘三米右邊角位攤位



BOOTH SPECIFICATIONS		QTY.
	1000W x 500D x 750H LOCKABLE CABINET	9
	3000W x 300D WOODEN DISPLAY SHELF	6
	FLUORESCENT TUBE (FOR FASCIA ONLY)	16
	SPOTLIGHT 13 WATT LED LAMP (YELLOW LIGHT)	9
	LONG ARMED SPOTLIGHT (300MM) 13 WATT LED LAMP (YELLOW LIGHT)	6
	DISPLAY SHOWCASE W/. STICKER FIN. AND 2 X 50W TRACKLIGHT	3
	700W x 700D x 750H MEETING TABLE	3
	BLACK LEATHER CHAIR	9
	CEILING BEAM	15M
	RUBBISH BIN & CARPET (27sqm.)	

\*The Hong Kong Trade Development Council reserves the right to change the configuration if necessary.

\*如有需要，香港貿易發展局有權更改攤位結構。

